



OA2 Two Cell

All Hazard High-Power Siren System

Whelen's OMNI-ALERT™ Series Provides an economical alternative for powerful omni-directional siren warning without compromising quality.

SYSTEM FEATURES

- **OA2** - Two omni-directional speaker cells assembled in a vertical column.
- Two-compartment (Type I) natural finish aluminum cabinet.
- Speaker cell includes two high efficiency 400 watt **EZ-PULL™** speaker drivers.
- Pole top mounting bracket included.
- Battery powered. Minimum of 15 minutes of full power output with batteries of our recommendation.
- AC temperature compensated 5 amp battery charger.
- 50' cable included.
- Two power amplifiers.
- Local controls or remote controls.
- Electronic siren controller.
- Tone generator.
- Timer.
- Local control push-buttons.
- **SI TEST®**
- Low battery alarm.
- Battery tray.
- Lightning arrestor.
- Six standard public warning tones - Wail, Whoop, Attack, Hi-Lo, Alert, Airhorn.



Type I
Electronic Cabinet



SYSTEM OPTIONS

- **Solar option** - 2 each 80 watt panels, with brackets and solar regulator.
- **Batteries** - 2 each Whelen approved batteries. Check Whelen's web site (www.whelen.com) for other recommended batteries.
- **Pole top bracket.**

SIREN ACTIVATION CONTROLS

Our VHF High and UHF siren activation control packages include the following:

- Radio.
- Radio Interface.
- Tone Squelch.
- 2-3dB Gain Omni-Directional Antenna with Bracket.
- 35' of RG58 Antenna Cable.
- Polyphaser.
- SI TEST.

Other features are dependant upon one or two-way controls. Whelen equipment can be interfaced with many different types of two-way radio communications products and systems. The following is offered as standard options. Contact factory for special applications.

ONE-WAY CONTROLS

- **OAUXIN** - Auxiliary board for contact closure activation.
- **OD2030LL** - 10 Digit DTMF landline activation.
- **OD230NV** - 10 Digit DTMF VHF high band narrow band / 150-170 Mhz
- **OD230NU** - 10 Digit DTMF UHF narrow band / 450-470 Mhz
- **OTT** - Two tone sequential option

TWO-WAY CONTROLS

- **OAUXCS** - Two-way contact closure activation and status board
- **OC2030LL** - Two-way landline activation
- **OC230NV** - 10 digit DTMF VHF high band narrow band / 150-170 Mhz
- **OC230NU** - 10 Digit DTMF UHF narrow band / 450-470 Mhz

OPTIONS

- **OFSKXMOD** - Converts the siren activation controls to FSK format
- **OSTATUS** - Cabinet window LED status indicator
- **OPGINT** - Paging interface to interface Whelen tones with existing paging systems
- **OINTRU** - Intrusion alarm (available with two-way only)

OA2 Two Cell



Specifications

Component	Height Inches (CM)	Width Inches (CM)	Depth Inches (CM)	Weight Lbs. (kg)
OA2 Speaker	32.9 (83.6)	33.4 (84.8)	–	156 (70.8)
Electronics Cabinet Type I	32.5 (82.6)	22.5 (57.2)	10.5 (26.7)	62 (28.2)
Pole Top Bracket (Optional)	30.5 (77)	12.0 (30.5) x 13.5 (34.3)	See Drawing	71 (32.3)

Batteries add 90 lbs. Pallets, boxes and skids add weight.

MASS NOTIFICATION PRODUCTS

Whelen Engineering Company, Inc.

51 Winthrop Road
 Chester, Connecticut 06412-0684
 860-526-9504
 800-637-4736
 www.whelen.com
 iowasales@whelen.com

Whelen Engineering Company, Inc.
 reserves the right to upgrade its products with
 design improvements without notification.
 © 2016 Whelen Engineering Company, Inc.
 Printed in the U.S.A.
 116951-040116



*"Our Mass Notification Products
 Speak for Themselves"™*

Electrical

- Battery Charger Input: 120VAC, 60Hz, 7A Fuse.
- Battery Charger Output: 28VDC, 5A.
- Batteries: 2-12V, 60AH lead calcium (user supplied).
- Standby Current: 70mA.
- Operating Current: 44A, 24VDC.
- Power Amplifier Output Power: 800 watts.

Environmental

- Operating Temperature: -35C to +60C.
- Storage Temperature: -65C to +125C.
- Humidity, Non-Condensing: 0 to 95%.

Ordering Information

BASIC SYSTEM INCLUDES ALL OF THE FOLLOWING

- OA2 - Speaker Assembly & Electronics Cabinet.
- OPTIONS**
- OAUXIN - Auxiliary board for contact closure activation.
- OAUXCS - Auxiliary / status control board for contact closure activation and status.
- OD2030LL, OD230NV, OD230NU - One-way narrow band radio control ①.
- OC2030LL, OC230NV, OC230NU - Two-way narrow band radio control / status monitoring, COMM/STAT™.
- OTT - Two tone sequential.
- OFSKXMOD - FSK format.
- OSTATUS - Cabinet window LED status indicator.
- OPGINT - Paging interface to interface Whelen tones with existing paging systems.
- OINTRU - Intrusion alarm.
- OSBC80 - Solar power.
- OPTB - Speaker pole top bracket.
- OBATT - One pair of batteries.

NOTES

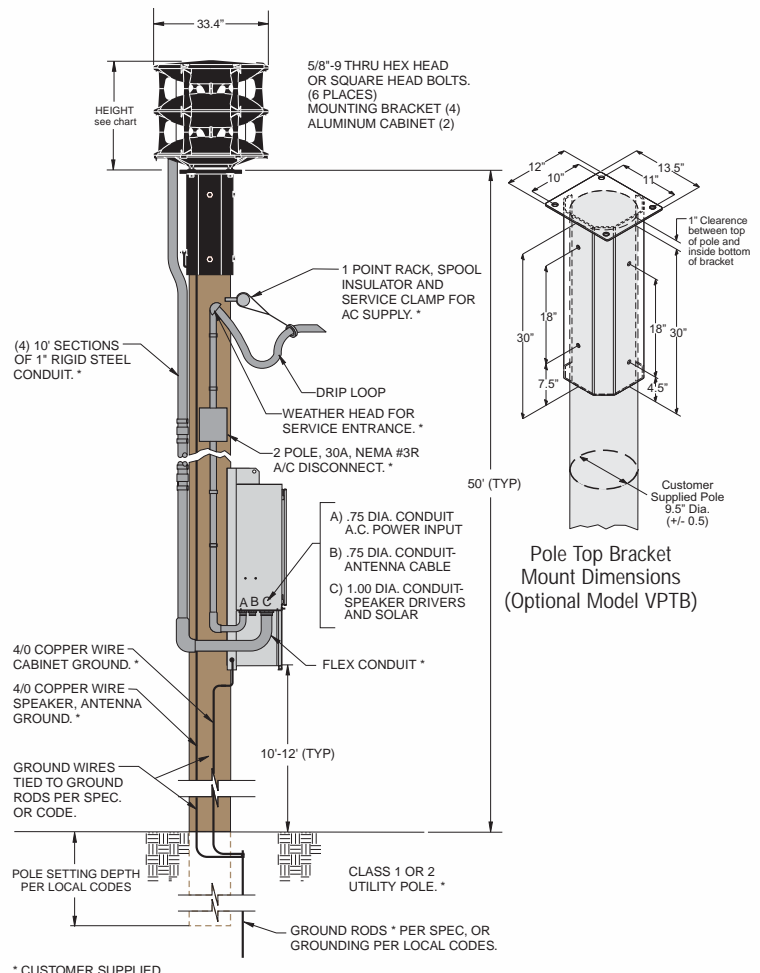
- ① 10 digit DTMF Controls • Landline • VHF High Band / 150-170 Mhz • UHF / 450-470 Mhz
 Our VHF High and UHF activation control packages include tone squelch, radio, radio interface, 2-3dB gain omni-directional antenna with bracket, 35' of RG58 antenna cable and polyphaser.

OA2 Acoustic Performance

Wattage: 800 watts

Estimated Range: 2,200 ft / 670 m

Weather, terrain and other structures may impact the range. Each siren within the system may have a decreased or increased range depending on conditions beyond our control.



* CUSTOMER SUPPLIED